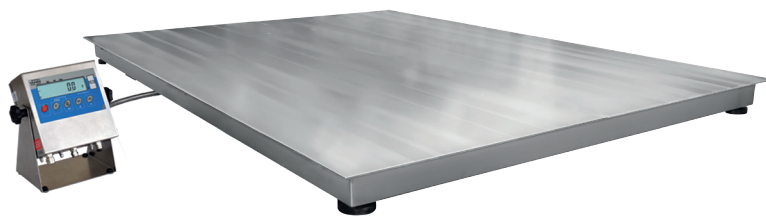
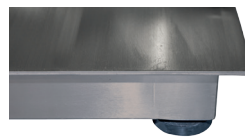


# Stainless Steel WPT/4 H 4 Load Cell Platform Scale

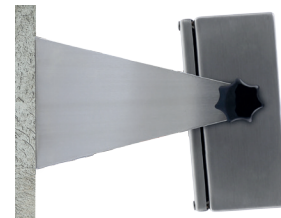
Precise measurements of large loads  
in moist environment and at direct contact with water



WPT/4 H



Stainless steel platform  
and weighing pan



Possibility to mount the  
indicator to the wall



PUE C/31H  
indicator with LCD display  
in stainless steel housing

## Functions



Parts  
counting



Percent  
weighing



Totalizing



In-built  
battery



Replaceable  
units



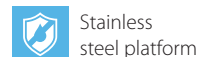
+/- control



Animal  
weighing



Peak hold



Stainless  
steel platform

## Features

### Precise Weighing Indications in Challenging Industrial Conditions

Mass measurement carried out using 4 load cells guarantees weighing accuracy regardless positioning of the load on the platform. The scale ensures precise and fast mass measurement in challenging industrial conditions.

### Robustness and Resistance to Ambient Conditions

Robust platform made of stainless steel allows to operate large loads in moist environment and at direct contact with water (e.g. meat and fish industry).

### Versatility of Use

Optional ramps enable easy loading and unloading of large loads transported onto the weighing pan using trolleys.

### Cooperation with PUE C/31 H Indicator

The scale can be operated via uncomplicated and reliable PUE C/31 H indicator housed in a stainless steel housing.

### Uncomplicated Operation and Clear Presentation of Indications

Due to a backlit LCD display the measurement result is clearly visible. Easy operation enables fast and reliable measurements to be carried out even by an inexperienced operator.

### Uninterrupted Operation due to an Internal Battery

Integrated battery of the weighing indicator enables several hours long mobile operation.

### Ergonomics and Comfort of Operation

With use of a long cable it is possible to locate the indicator in a place facilitating convenient operation or on the wall. An additional accessory enables placing the indicator on a stand.

### Customizable Instrument

Numerous variants of weighing pan dimensions and broad range of maximum capacities enable selecting the best weighing instrument suiting specific requirements and needs.

## Technical Specifications

|   | WPT/4 150 H6                                  | WPT/4 300 H6                                  | WPT/4 600 H6*                                 |
|---|---|---|---|
| <b>Maximum capacity [Max]</b>                 | 150 kg  | 300 kg  | 600 kg  |
| <b>Minimum capacity</b>                       | 1 kg  | 2 kg  | 4 kg  |
| <b>Readability [d]</b>                        | 50 g  | 100 g   | 200 g   |
| <b>Max readability for non-verified scale</b> | 20 g  | 20 g  | 50 g  |
| <b>Verification unit [e]</b>                  | 50 g  | 100 g   | 200 g   |
| <b>Tare range</b>                             | -150 kg                                       | -300 kg                                       | -600 kg                                       |
| <b>Verification</b>                           | Yes   | Yes   | Yes   |
| <b>OIML class</b>                             | III   | III   | III   |
| <b>Platform material</b>                      | AISI304 stainless steel                       | AISI304 stainless steel                       | AISI304 stainless steel                       |
| <b>Weighing pan material</b>                  | AISI304 stainless steel                       | AISI304 stainless steel                       | AISI304 stainless steel                       |
| <b>Indicator fastening</b>                    | 3 m cable                                     | 3 m cable                                     | 3 m cable                                     |
| <b>Display</b>                                | LCD (with backlight)                          | LCD (with backlight)                          | LCD (with backlight)                          |
| <b>Keyboard</b>                               | 5 keys  | 5 keys  | 5 keys  |
| <b>Indicator</b>                              | PUE C/31H                                     | PUE C/31H                                     | PUE C/31H                                     |
| <b>Ingress protection - platform</b>          | IP 68   | IP 68   | IP 68   |
| <b>Ingress protection - indicator</b>         | IP 68/69                                      | IP 68/69                                      | IP 68/69                                      |
| <b>RS 232</b>                                 | 1   | 1   | 1   |
| <b>Power supply</b>                           | 100 ÷ 240 V AC 50 ÷ 60 Hz / 12 V DC + battery | 100 ÷ 240 V AC 50 ÷ 60 Hz / 12 V DC + battery | 100 ÷ 240 V AC 50 ÷ 60 Hz / 12 V DC + battery |
| <b>Battery operation time</b>                 | 45 hours                                      | 45 hours                                      | 45 hours                                      |
| <b>Power consumption</b>                      | 6 W   | 6 W   | 6 W   |
| <b>Operating temperature</b>                  | -10 ÷ +40 °C                                  | -10 ÷ +40 °C                                  | -10 ÷ +40 °C                                  |
| <b>Relative humidity**</b>                    | 10 ÷ 85%                                      | 10 ÷ 85%                                      | 10 ÷ 85%                                      |
| <b>Transport and storage temperature</b>      | -10 ÷ +50 °C                                  | -10 ÷ +50 °C                                  | -10 ÷ +50 °C                                  |
| <b>Weighing pan dimensions</b>                | 800 × 800 mm                                  | 800 × 800 mm                                  | 800 × 800 mm                                  |
| <b>Indicator dimensions</b>                   | 226 × 250 × 120 mm                            | 226 × 250 × 120 mm                            | 226 × 250 × 120 mm                            |
| <b>Net weight</b>                             | 60 kg   | 60 kg   | 60 kg   |
| <b>Gross weight</b>                           | 80 kg   | 80 kg   | 80 kg   |
| <b>Packaging dimensions</b>                   | 900 × 900 × 430 mm                            | 900 × 900 × 430 mm                            | 900 × 900 × 430 mm                            |

\* option: dual range weighing instrument

\*\* non-condensing conditions

|  | WPT/4 150 H7                                  | WPT/4 300 H7                                  | WPT/4 600 H7*                                 |
|--|---|---|---|
| Maximum capacity [Max]                 | 150 kg  | 300 kg  | 600 kg  |
| Minimum capacity                       | 1 kg  | 2 kg  | 4 kg  |
| Readability [d]                        | 50 g  | 100 g   | 200 g   |
| Max readability for non-verified scale | 20 g  | 20 g  | 50 g  |
| Verification unit [e]                  | 50 g  | 100 g   | 200 g   |
| Tare range                             | -150 kg                                       | -300 kg                                       | -600 kg                                       |
| Verification                           | Yes   | Yes   | Yes   |
| OIML class                             | III   | III   | III   |
| Platform material                      | AISI304 stainless steel                       | AISI304 stainless steel                       | AISI304 stainless steel                       |
| Weighing pan material                  | AISI304 stainless steel                       | AISI304 stainless steel                       | AISI304 stainless steel                       |
| Indicator fastening                    | 3 m cable                                     | 3 m cable                                     | 3 m cable                                     |
| Display                                | LCD (with backlight)                          | LCD (with backlight)                          | LCD (with backlight)                          |
| Keyboard                               | 5 keys  | 5 keys  | 5 keys  |
| Indicator                              | PUE C/31H                                     | PUE C/31H                                     | PUE C/31H                                     |
| Ingress protection - platform          | IP 68   | IP 68   | IP 68   |
| Ingress protection - indicator         | IP 68/69                                      | IP 68/69                                      | IP 68/69                                      |
| RS 232                                 | 1   | 1   | 1   |
| Power supply                           | 100 ÷ 240 V AC 50 ÷ 60 Hz / 12 V DC + battery | 100 ÷ 240 V AC 50 ÷ 60 Hz / 12 V DC + battery | 100 ÷ 240 V AC 50 ÷ 60 Hz / 12 V DC + battery |
| Battery operation time                 | 45 hours                                      | 45 hours                                      | 45 hours                                      |
| Power consumption                      | 6 W   | 6 W   | 6 W   |
| Operating temperature                  | -10 ÷ +40 °C                                  | -10 ÷ +40 °C                                  | -10 ÷ +40 °C                                  |
| Relative humidity**                    | 10 ÷ 85%                                      | 10 ÷ 85%                                      | 10 ÷ 85%                                      |
| Transport and storage temperature      | -10 ÷ +50 °C                                  | -10 ÷ +50 °C                                  | -10 ÷ +50 °C                                  |
| Weighing pan dimensions                | 1000 × 1000 mm                                | 1000 × 1000 mm                                | 1000 × 1000 mm                                |
| Indicator dimensions                   | 226 × 250 × 120 mm                            | 226 × 250 × 120 mm                            | 226 × 250 × 120 mm                            |
| Net weight                             | 85 kg   | 85 kg   | 85 kg   |
| Gross weight                           | 110 kg  | 110 kg  | 110 kg  |
| Packaging dimensions                   | 1100 × 1100 × 430 mm                          | 1100 × 1100 × 430 mm                          | 1100 × 1100 × 430 mm                          |

\* option: dual range weighing instrument

\*\* non-condensing conditions

|  | WPT/4 1500 H7*                                | WPT/4 300 H8                                  | WPT/4 600 H8*                                 |
|--|---|---|---|
| Maximum capacity [Max]                 | 1500 kg                                       | 300 kg  | 600 kg  |
| Minimum capacity                       | 10 kg   | 2 kg  | 4 kg  |
| Readability [d]                        | 500 g   | 100 g   | 200 g   |
| Max readability for non-verified scale | 100 g   | 20 g  | 50 g  |
| Verification unit [e]                  | 500 g   | 100 g   | 200 g   |
| Tare range                             | -1500 kg                                      | -300 kg                                       | -600 kg                                       |
| Verification                           | Yes   | Yes   | Yes   |
| OIML class                             | III   | III   | III   |
| Platform material                      | AISI304 stainless steel                       | AISI304 stainless steel                       | AISI304 stainless steel                       |
| Weighing pan material                  | AISI304 stainless steel                       | AISI304 stainless steel                       | AISI304 stainless steel                       |
| Indicator fastening                    | 3 m cable                                     | 3 m cable                                     | 3 m cable                                     |
| Display                                | LCD (with backlight)                          | LCD (with backlight)                          | LCD (with backlight)                          |
| Keyboard                               | 5 keys  | 5 keys  | 5 keys  |
| Indicator                              | PUE C/31H                                     | PUE C/31H                                     | PUE C/31H                                     |
| Ingress protection - platform          | IP 68   | IP 68   | IP 68   |
| Ingress protection - indicator         | IP 68/69                                      | IP 68/69                                      | IP 68/69                                      |
| RS 232                                 | 1   | 1   | 1   |
| Power supply                           | 100 ÷ 240 V AC 50 ÷ 60 Hz / 12 V DC + battery | 100 ÷ 240 V AC 50 ÷ 60 Hz / 12 V DC + battery | 100 ÷ 240 V AC 50 ÷ 60 Hz / 12 V DC + battery |
| Battery operation time                 | 45 hours                                      | 45 hours                                      | 45 hours                                      |
| Power consumption                      | 6 W   | 6 W   | 6 W   |
| Operating temperature                  | -10 ÷ +40 °C                                  | -10 ÷ +40 °C                                  | -10 ÷ +40 °C                                  |
| Relative humidity**                    | 10 ÷ 85%                                      | 10 ÷ 85%                                      | 10 ÷ 85%                                      |
| Transport and storage temperature      | -10 ÷ +50 °C                                  | -10 ÷ +50 °C                                  | -10 ÷ +50 °C                                  |
| Weighing pan dimensions                | 1000 × 1000 mm                                | 1200 × 1200 mm                                | 1200 × 1200 mm                                |
| Indicator dimensions                   | 226 × 250 × 120 mm                            | 226 × 250 × 120 mm                            | 226 × 250 × 120 mm                            |
| Net weight                             | 95 kg   | 125 kg  | 125 kg  |
| Gross weight                           | 120 kg  | 160 kg  | 160 kg  |
| Packaging dimensions                   | 1100 × 1100 × 430 mm                          | 1300 × 1300 × 430 mm                          | 1300 × 1300 × 430 mm                          |

\* option: dual range weighing instrument

\*\* non-condensing conditions

|   | WPT/4 1500 H8*                                | WPT/4 3000 H8*                                | WPT/4 300 H8/9                                |
|---|---|---|---|
| <b>Maximum capacity [Max]</b>                 | 1500 kg                                       | 3000 kg                                       | 300 kg  |
| <b>Minimum capacity</b>                       | 10 kg   | 20 kg   | 2 kg  |
| <b>Readability [d]</b>                        | 500 g   | 1000 g  | 100 g   |
| <b>Max readability for non-verified scale</b> | 100 g   | 200 g   | 20 g  |
| <b>Verification unit [e]</b>                  | 500 g   | 1000 g  | 100 g   |
| <b>Tare range</b>                             | -1500 kg                                      | -3000 kg                                      | -300 kg                                       |
| <b>Verification</b>                           | Yes   | Yes   | Yes   |
| <b>OIML class</b>                             | III   | III   | III   |
| <b>Platform material</b>                      | AISI304 stainless steel                       | AISI304 stainless steel                       | AISI304 stainless steel                       |
| <b>Weighing pan material</b>                  | AISI304 stainless steel                       | AISI304 stainless steel                       | AISI304 stainless steel                       |
| <b>Indicator fastening</b>                    | 3 m cable                                     | 3 m cable                                     | 3 m cable                                     |
| <b>Display</b>                                | LCD (with backlight)                          | LCD (with backlight)                          | LCD (with backlight)                          |
| <b>Keyboard</b>                               | 5 keys  | 5 keys  | 5 keys  |
| <b>Indicator</b>                              | PUE C/31H                                     | PUE C/31H                                     | PUE C/31H                                     |
| <b>Ingress protection - platform</b>          | IP 68   | IP 68   | IP 68   |
| <b>Ingress protection - indicator</b>         | IP 68/69                                      | IP 68/69                                      | IP 68/69                                      |
| <b>RS 232</b>                                 | 1   | 1   | 1   |
| <b>Power supply</b>                           | 100 ÷ 240 V AC 50 ÷ 60 Hz / 12 V DC + battery | 100 ÷ 240 V AC 50 ÷ 60 Hz / 12 V DC + battery | 100 ÷ 240 V AC 50 ÷ 60 Hz / 12 V DC + battery |
| <b>Battery operation time</b>                 | 45 hours                                      | 45 hours                                      | 45 hours                                      |
| <b>Power consumption</b>                      | 6 W   | 6 W   | 6 W   |
| <b>Operating temperature</b>                  | -10 ÷ +40 °C                                  | -10 ÷ +40 °C                                  | -10 ÷ +40 °C                                  |
| <b>Relative humidity**</b>                    | 10 ÷ 85%                                      | 10 ÷ 85%                                      | 10 ÷ 85%                                      |
| <b>Transport and storage temperature</b>      | -10 ÷ +50 °C                                  | -10 ÷ +50 °C                                  | -10 ÷ +50 °C                                  |
| <b>Weighing pan dimensions</b>                | 1200 × 1200 mm                                | 1200 × 1200 mm                                | 1200 × 1500 mm                                |
| <b>Indicator dimensions</b>                   | 226 × 250 × 120 mm                            | 226 × 250 × 120 mm                            | 226 × 250 × 120 mm                            |
| <b>Net weight</b>                             | 125 kg  | 130 kg  | 155 kg  |
| <b>Gross weight</b>                           | 160 kg  | 165 kg  | 190 kg  |
| <b>Packaging dimensions</b>                   | 1300 × 1300 × 430 mm                          | 1300 × 1300 × 450 mm                          | 1600 × 1300 × 430 mm                          |

\* option: dual range weighing instrument

\*\* non-condensing conditions

|   | WPT/4 600 H8/9*                               | WPT/4 1500 H8/9*                              | WPT/4 3000 H8/9*                              |
|---|---|---|---|
| <b>Maximum capacity [Max]</b>                 | 600 kg  | 1500 kg                                       | 3000 kg                                       |
| <b>Minimum capacity</b>                       | 4 kg  | 10 kg   | 20 kg   |
| <b>Readability [d]</b>                        | 200 g   | 500 kg  | 1000 g  |
| <b>Max readability for non-verified scale</b> | 50 g  | 100 g   | 200 g   |
| <b>Verification unit [e]</b>                  | 200 g   | 500 g   | 1000 g  |
| <b>Tare range</b>                             | -600 kg                                       | -1500 kg                                      | -3000 kg                                      |
| <b>Verification</b>                           | Yes   | Yes   | Yes   |
| <b>OIML class</b>                             | III   | III   | III   |
| <b>Platform material</b>                      | AISI304 stainless steel                       | AISI304 stainless steel                       | AISI304 stainless steel                       |
| <b>Weighing pan material</b>                  | AISI304 stainless steel                       | AISI304 stainless steel                       | AISI304 stainless steel                       |
| <b>Indicator fastening</b>                    | 3 m cable                                     | 3 m cable                                     | 3 m cable                                     |
| <b>Display</b>                                | LCD (with backlight)                          | LCD (with backlight)                          | LCD (with backlight)                          |
| <b>Keyboard</b>                               | 5 keys  | 5 keys  | 5 keys  |
| <b>Indicator</b>                              | PUE C/31H                                     | PUE C/31H                                     | PUE C/31H                                     |
| <b>Ingress protection - platform</b>          | IP 68   | IP 68   | IP 68   |
| <b>Ingress protection - indicator</b>         | IP 68/69                                      | IP 68/69                                      | IP 68/69                                      |
| <b>RS 232</b>                                 | 1   | 1   | 1   |
| <b>Power supply</b>                           | 100 ÷ 240 V AC 50 ÷ 60 Hz / 12 V DC + battery | 100 ÷ 240 V AC 50 ÷ 60 Hz / 12 V DC + battery | 100 ÷ 240 V AC 50 ÷ 60 Hz / 12 V DC + battery |
| <b>Battery operation time</b>                 | 45 hours                                      | 45 hours                                      | 45 hours                                      |
| <b>Power consumption</b>                      | 6 W   | 6 W   | 6 W   |
| <b>Operating temperature</b>                  | -10 ÷ +40 °C                                  | -10 ÷ +40 °C                                  | -10 ÷ +40 °C                                  |
| <b>Relative humidity**</b>                    | 10 ÷ 85%                                      | 10 ÷ 85%                                      | 10 ÷ 85%                                      |
| <b>Transport and storage temperature</b>      | -10 ÷ +50 °C                                  | -10 ÷ +50 °C                                  | -10 ÷ +50 °C                                  |
| <b>Weighing pan dimensions</b>                | 1200 × 1500 mm                                | 1200 × 1500 mm                                | 1200 × 1500 mm                                |
| <b>Indicator dimensions</b>                   | 226 × 250 × 120 mm                            | 226 × 250 × 120 mm                            | 226 × 250 × 120 mm                            |
| <b>Net weight</b>                             | 155 kg  | 155 kg  | 160 kg  |
| <b>Gross weight</b>                           | 190 kg  | 190 kg  | 195 kg  |
| <b>Packaging dimensions</b>                   | 1600 × 1300 × 430 mm                          | 1600 × 1300 × 430 mm                          | 1600 × 1300 × 450 mm                          |

\* option: dual range weighing instrument

\*\* non-condensing conditions

|  | WPT/4 300 H9                                  | WPT/4 600 H9*                                 | WPT/4 1500 H9*                                |
|--|---|---|---|
| Maximum capacity [Max]                 | 300 kg  | 600 kg  | 1500 kg                                       |
| Minimum capacity                       | 2 kg  | 4 kg  | 10 kg   |
| Readability [d]                        | 100 g   | 200 g   | 500 g   |
| Max readability for non-verified scale | 50 g  | 50 g  | 100 g   |
| Verification unit [e]                  | 100 g   | 200 g   | 500 g   |
| Tare range                             | -300 kg                                       | -600 kg                                       | -1500 kg                                      |
| Verification                           | Yes   | Yes   | Yes   |
| OIML class                             | III   | III   | III   |
| Platform material                      | AISI304 stainless steel                       | AISI304 stainless steel                       | AISI304 stainless steel                       |
| Weighing pan material                  | AISI304 stainless steel                       | AISI304 stainless steel                       | AISI304 stainless steel                       |
| Indicator fastening                    | 3 m cable                                     | 3 m cable                                     | 3 m cable                                     |
| Display                                | LCD (with backlight)                          | LCD (with backlight)                          | LCD (with backlight)                          |
| Keyboard                               | 5 keys  | 5 keys  | 5 keys  |
| Indicator                              | PUE C/31H                                     | PUE C/31H                                     | PUE C/31H                                     |
| Ingress protection - platform          | IP 68   | IP 68   | IP 68   |
| Ingress protection - indicator         | IP 68/69                                      | IP 68/69                                      | IP 68/69                                      |
| RS 232                                 | 1   | 1   | 1   |
| Power supply                           | 100 ÷ 240 V AC 50 ÷ 60 Hz / 12 V DC + battery | 100 ÷ 240 V AC 50 ÷ 60 Hz / 12 V DC + battery | 100 ÷ 240 V AC 50 ÷ 60 Hz / 12 V DC + battery |
| Battery operation time                 | 45 hours                                      | 45 hours                                      | 45 hours                                      |
| Power consumption                      | 6 W   | 6 W   | 6 W   |
| Operating temperature                  | -10 ÷ +40 °C                                  | -10 ÷ +40 °C                                  | -10 ÷ +40 °C                                  |
| Relative humidity**                    | 10 ÷ 85%                                      | 10 ÷ 85%                                      | 10 ÷ 85%                                      |
| Transport and storage temperature      | -10 ÷ +50 °C                                  | -10 ÷ +50 °C                                  | -10 ÷ +50 °C                                  |
| Weighing pan dimensions                | 1500 × 1500 mm                                | 1500 × 1500 mm                                | 1500 × 1500 mm                                |
| Indicator dimensions                   | 226 × 250 × 120 mm                            | 226 × 250 × 120 mm                            | 226 × 250 × 120 mm                            |
| Net weight                             | 190 kg  | 190 kg  | 190 kg  |
| Gross weight                           | 230 kg  | 230 kg  | 230 kg  |
| Packaging dimensions                   | 1600 × 1600 × 430 mm                          | 1600 × 1600 × 430 mm                          | 1600 × 1600 × 430 mm                          |

\* option: dual range weighing instrument

\*\* non-condensing conditions

|   | WPT/4 3000 H9*                                | WPT/4 6000 H9*                                | WPT/4 600 H10                                 |
|---|---|---|---|
| <b>Maximum capacity [Max]</b>                 | 3000 kg                                       | 6000 kg                                       | 600 kg  |
| <b>Minimum capacity</b>                       | 20 kg   | 40 kg   | 4 kg  |
| <b>Readability [d]</b>                        | 1000 g  | 2000 g  | 200 g   |
| <b>Max readability for non-verified scale</b> | 200 g   | 500 g   | 50 g  |
| <b>Verification unit [e]</b>                  | 1000 g  | 2000 g  | 200 g   |
| <b>Tare range</b>                             | -3000 kg                                      | -6000 kg                                      | -600 kg                                       |
| <b>Verification</b>                           | Yes   | Yes   | Yes   |
| <b>OIML class</b>                             | III   | III   | III   |
| <b>Platform material</b>                      | AISI304 stainless steel                       | AISI304 stainless steel                       | AISI304 stainless steel                       |
| <b>Weighing pan material</b>                  | AISI304 stainless steel                       | AISI304 stainless steel                       | AISI304 stainless steel                       |
| <b>Indicator fastening</b>                    | 3 m cable                                     | 3 m cable                                     | 3 m cable                                     |
| <b>Display</b>                                | LCD (with backlight)                          | LCD (with backlight)                          | LCD (with backlight)                          |
| <b>Keyboard</b>                               | 5 keys  | 5 keys  | 5 keys  |
| <b>Indicator</b>                              | PUE C/31H                                     | PUE C/31H                                     | PUE C/31H                                     |
| <b>Ingress protection - platform</b>          | IP 68   | IP 68   | IP 68   |
| <b>Ingress protection - indicator</b>         | IP 68/69                                      | IP 68/69                                      | IP 68/69                                      |
| <b>RS 232</b>                                 | 1   | 1   | 1   |
| <b>Power supply</b>                           | 100 ÷ 240 V AC 50 ÷ 60 Hz / 12 V DC + battery | 100 ÷ 240 V AC 50 ÷ 60 Hz / 12 V DC + battery | 100 ÷ 240 V AC 50 ÷ 60 Hz / 12 V DC + battery |
| <b>Battery operation time</b>                 | 45 hours                                      | 45 hours                                      | 45 hours                                      |
| <b>Power consumption</b>                      | 6 W   | 6 W   | 6 W   |
| <b>Operating temperature</b>                  | -10 ÷ +40 °C                                  | -10 ÷ +40 °C                                  | -10 ÷ +40 °C                                  |
| <b>Relative humidity**</b>                    | 10 ÷ 85%                                      | 10 ÷ 85%                                      | 10 ÷ 85%                                      |
| <b>Transport and storage temperature</b>      | -10 ÷ +50 °C                                  | -10 ÷ +50 °C                                  | -10 ÷ +50 °C                                  |
| <b>Weighing pan dimensions</b>                | 1500 × 1500 mm                                | 1500 × 1500 mm                                | 1500 × 2000 mm                                |
| <b>Indicator dimensions</b>                   | 226 × 250 × 120 mm                            | 226 × 250 × 120 mm                            | 226 × 250 × 120 mm                            |
| <b>Net weight</b>                             | 200 kg  | 200 kg  | 285 kg  |
| <b>Gross weight</b>                           | 240 kg  | 240 kg  | 330 kg  |
| <b>Packaging dimensions</b>                   | 1600 × 1600 × 450 mm                          | 1600 × 1600 × 430 mm                          | 2100 × 1600 × 500 mm                          |

\* option: dual range weighing instrument

\*\* non-condensing conditions

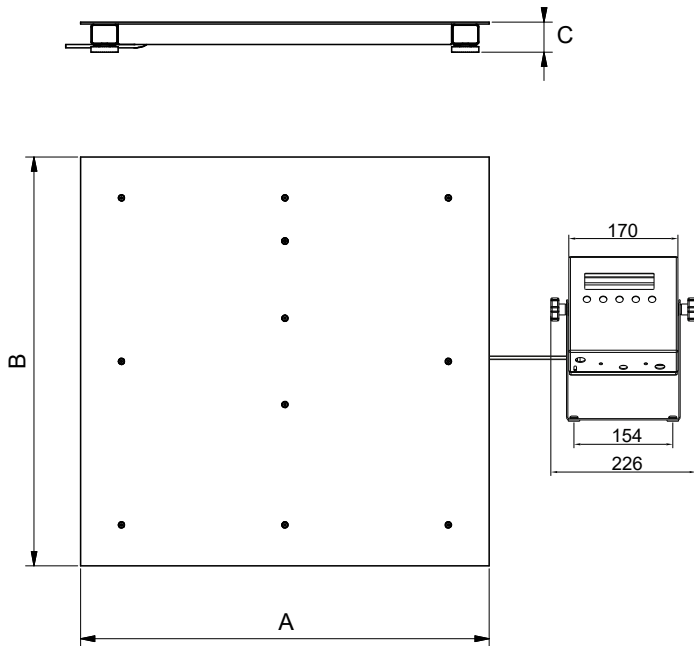


|   | WPT/4 1500 H10*                               | WPT/4 3000 H10*                               | WPT/4 6000 H10*                               |
|---|---|---|---|
| <b>Maximum capacity [Max]</b>                 | 1500 kg                                       | 3000 kg                                       | 6000 kg                                       |
| <b>Minimum capacity</b>                       | 10 kg   | 20 kg   | 40 kg   |
| <b>Readability [d]</b>                        | 500 g   | 1000 g  | 2000 g  |
| <b>Max readability for non-verified scale</b> | 100 g   | 200 g   | 500 g   |
| <b>Verification unit [e]</b>                  | 500 g   | 1000 g  | 2000 g  |
| <b>Tare range</b>                             | -1500 kg                                      | -3000 kg                                      | -6000 kg                                      |
| <b>Verification</b>                           | Yes   | Yes   | Yes   |
| <b>OIML class</b>                             | III   | III   | III   |
| <b>Platform material</b>                      | AISI304 stainless steel                       | AISI304 stainless steel                       | AISI304 stainless steel                       |
| <b>Weighing pan material</b>                  | AISI304 stainless steel                       | AISI304 stainless steel                       | AISI304 stainless steel                       |
| <b>Indicator fastening</b>                    | 3 m cable                                     | 3 m cable                                     | 3 m cable                                     |
| <b>Display</b>                                | LCD (with backlight)                          | LCD (with backlight)                          | LCD (with backlight)                          |
| <b>Keyboard</b>                               | 5 keys  | 5 keys  | 5 keys  |
| <b>Indicator</b>                              | PUE C/31H                                     | PUE C/31H                                     | PUE C/31H                                     |
| <b>Ingress protection - platform</b>          | IP 68   | IP 68   | IP 68   |
| <b>Ingress protection - indicator</b>         | IP 68/69                                      | IP 68/69                                      | IP 68/69                                      |
| <b>RS 232</b>                                 | 1   | 1   | 1   |
| <b>Power supply</b>                           | 100 ÷ 240 V AC 50 ÷ 60 Hz / 12 V DC + battery | 100 ÷ 240 V AC 50 ÷ 60 Hz / 12 V DC + battery | 100 ÷ 240 V AC 50 ÷ 60 Hz / 12 V DC + battery |
| <b>Battery operation time</b>                 | 45 hours                                      | 45 hours                                      | 45 hours                                      |
| <b>Power consumption</b>                      | 6 W   | 6 W   | 6 W   |
| <b>Operating temperature</b>                  | -10 ÷ +40 °C                                  | -10 ÷ +40 °C                                  | -10 ÷ +40 °C                                  |
| <b>Relative humidity**</b>                    | 10 ÷ 85%                                      | 10 ÷ 85%                                      | 10 ÷ 85%                                      |
| <b>Transport and storage temperature</b>      | -10 ÷ +50 °C                                  | -10 ÷ +50 °C                                  | -10 ÷ +50 °C                                  |
| <b>Weighing pan dimensions</b>                | 1500 × 2000 mm                                | 1500 × 2000 mm                                | 1500 × 2000 mm                                |
| <b>Indicator dimensions</b>                   | 226 × 250 × 120 mm                            | 226 × 250 × 120 mm                            | 226 × 250 × 120 mm                            |
| <b>Net weight</b>                             | 285 kg  | 285 kg  | 350 kg  |
| <b>Gross weight</b>                           | 330 kg  | 330 kg  | 400 kg  |
| <b>Packaging dimensions</b>                   | 2100 × 1600 × 500 mm                          | 2100 × 1600 × 500 mm                          | 2100 × 1600 × 500 mm                          |

\* option: dual range weighing instrument

\*\* non-condensing conditions

## Dimensions



| Scale type      | A    | B    | C      |
|-----------------|------|------|--------|
| WPT/4 300 H6    | 800  | 800  | 88 ±2  |
| WPT/4 600 H6    | 800  | 800  | 88 ±2  |
| WPT/4 300 H7    | 1000 | 1000 | 88 ±2  |
| WPT/4 600 H7    | 1000 | 1000 | 88 ±2  |
| WPT/4 1500 H7   | 1000 | 1000 | 88 ±2  |
| WPT/4 1500 H8   | 1200 | 1200 | 88 ±2  |
| WPT/4 3000 H8   | 1200 | 1200 | 111 ±2 |
| WPT/4 1500 H8/9 | 1200 | 1500 | 88 ±2  |
| WPT/4 3000 H8/9 | 1200 | 1500 | 111 ±2 |
| WPT/4 1500 H9   | 1500 | 1500 | 88 ±2  |
| WPT/4 3000 H9   | 1500 | 1500 | 111 ±2 |
| WPT/4 3000 H10  | 1500 | 2000 | 111 ±2 |
| WPT/4 6000 H10  | 1500 | 2000 | 166 ±2 |

dimensions in mm

## Accessories

### Peripheral Devices

- Epson dot matrix printer
- LCD – WD-4/3 display (backlit)
- WWG-2/3 large-size display

### Cables, Converters

- RS 232 – PT0259 cable (scale - indicator)
- RS 232 – PT0326 cable (indicator– indicator)
- RS-232 – P0151 Epson printer cable
- RS232 – KR-04-2 converter

- RS232 – KR-04-3 converter
- AP2-3 current loop unit (in stainless steel housing)
- external power supply - K0046D (for PUE C/31H/Z)
- K0047 – cigarette lighter cable

### Remaining Accessories

- stands for indicators
- ramps for scales

## Dedicated Software

### R-LAB

- collecting measurements
- carrying out statistical analysis of measurements
- customized graphs and reports

### LabView Driver

- operation of RADWAG balances in LabView environment

### Scale editor

- Software designed to enable change of parameters in the PUEC/31 indicator.

### Radwag Development Studio

- presentation of functions (and subfunctions) of communication protocol (Common Communication Protocol)
- possibility of connection with weighing equipment on which each function is carried out,
- library with mass control, contained within the development environment
- complete documentation of the communication protocol
- set of user manuals for different solutions addressed for programmers employed in companies using RADWAG-manufactured weighing equipment

### RADWAG Connect

- establishing communication with all balances, scales and weighing modules using Common Communication Protocol
- communication via local network,
- support of basic functions
- auto searching for devices
- connecting with few devices simultaneously, swapping between them
- clear list of connected platforms
- record of measurements in the program,
- export of carried out measurements to CSV file,
- work performed using freely selected device with Windows 10 operating system

### RAD KEY

- Establishing cooperation between a weighing instrument and a computer

### R.Barcode

- The basic function software is presentation of the data sent by barcode scanners connected to PC via USB or RS232